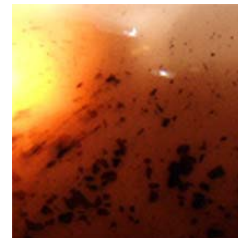


Contamination in fuel is far more common than most people realise! The two most common types of fuel contamination are water and fungal growth.

PRODUCT DESCRIPTION

Tank Tech Cleaner is a highly concentrated additive for the elimination and control of bacteria, fungi, and water contamination in fuels. Utilizing the latest in microbiological controls and surface-active agents, water and biological contamination is harmlessly dissolved and dispersed into the fuel, and subsequently burnt off. Bacteria and fungi such as the common air borne spore *Cladosporium Resinae* appear as dark "sludge" like particles in the fuel reservoir. At their worst this "sludge" can amount to large lumps or mats. Unlike the many biocide treatments that are on the market that are only designed to *kill* bacteria, not remove and are of no use in removing water, Tank Tech Cleaner will remove the entire problem.



The dark *sludge* in this fuel sample is *Cladosporium Resinae* (fuel bug) which can grow at an alarming rate, clogging injectors and filters.

Tank Tech Cleaner will not affect seals, hoses, and fittings within the fuel system. Regular use will eliminate problems associated with condensation and prevent further biological growth from occurring. This will give rise to:

- ✓ **Improved fuel economy**
- ✓ **Smoother acceleration**
- ✓ **Improved power**
- ✓ **Improved fuel flow (especially through filters and injectors)**



Left untreated, moisture in the fuel tank will eventually cause corrosion leading to even more problems.

APPLICATION

An initial dosage of 2 litres for every 1000 litres of fuel is recommended to thoroughly purge the fuel system of all contaminants. Regular subsequent dosage can then be reduced to as little as 1 litre for every 4000 litres of fuel. At this level of 1:4000, fuel quality will be maintained, condensation will be absorbed, and biological growths will be prevented.

If necessary, a maximum dosage of 5 litres may be added for every 1000 litres of fuel, where bacterial/fungal growth is inhibiting the flow of fuel through the system.

In all cases, Tank Tech Cleaner should be added prior to the addition of the fuel.

Tank Tech Cleaner will attack the existing 'bug' that is present, initial dosing will require more frequent cleaning/replacement of filters in the system to avoid blocking. Ensure that all efforts are taken to drain high levels of water first (where possible)



Clean fuel allows injectors to function normally, allowing maximum performance.

CHARACTERISTICS

Appearance	Dark Green Liquid
Specific Gravity	0.95
Flashpoint	176° C
Viscosity	Approx 18 cPs
pH (1% aq. soln.)	6.0-8.0

Safety Data Sheet Available on request